



Minnesota Cycling Federation

BI-MONTHLY MEETING Minutes

Date: Monday, 7 April 2008
Time: 7:00 – 9:00pm

Location: Lyngblomsten Senior Center
1415 Almond Avenue
St. Paul, MN 55108
(651) 646-2941

(Take Snelling towards the State Fairground main entrance. Turn east at lights on Midway, south on Pascal then east on Almond. Proceed to the second large parking lot on the north side of the road, and enter the building under the Visitor's Entrance canopy.)

<http://maps.google.com/maps?f=q&hl=en&geocode=&q=1400+Almond+Avenue,+St.+Paul,+MN+55108>

Facilitator: Kevin Schaeffer (President)
Note Taker: Russ Loucks (ROY)

ATTENDEES & INTRODUCTIONS (7:00 – 7:05)

- A. MCF Clubs Represented (Introductions):
1. **Athlete's Under Construction (Larry Martin)**
 2. Bike Club ()
 3. **Birchwood (Gabriella Tsuranami)**
 4. **Category 6 Racing Squad (Steven Gray)**
 5. Chippewa Valley Cycling Club ()
 6. Excel Cycle Club ()
 7. Flat City Cycling Club ()
 8. **Gopher Wheelmen (Dave LaPorte, Sherry Berde, Bruce Brasaemle)**
 9. Grandstay Cycling Team ()
 10. Great Plains Cycling Club ()
 11. **Grumpy's/LGR (Tim Hayes)**
 12. GSCA ()
 13. Kenwood CC ()
 14. Lake Superior Cycling Club ()
 15. **Loon State Cyclists (Mike Delaney, Kevin Schaeffer, Mike Lyner)**
 16. Make Shift Bicycle Club ()
 17. Mid-Minnesota Cycling Club()
 18. Midwest Women's Bicycle Racing Team ()
 19. Milltown Cycles ()
 20. Minneapolis Bicycle Racing Club ()
 21. Minnesota Cycling Team ()
 22. Minnesota Junior Cycling ()
 23. NSC Velo Club ()
 24. On-Support ()
 25. Peace Coffee ()
 26. Ridley Factory Team ()
 27. Rum River Cycling ()
 28. SE Minnesota Velo – Velo Rochester ()
 29. SE Minnesota Velo – Women on Wheels ()
 30. **Silver Cycling (Russ Loucks)**
 31. **SpeedFix (Andy Kruse)**
 32. **St Paul Bicycle Racing Club (Tim Laberge)**
 33. Super Team Racing ()
 34. **Synergy (Ben Popp)**
 35. The Hub Cycling League()
 36. The Hut Cycling Team ()
 37. **University of Minnesota Cycling Club (Maria Stewart)**

38. **Velo Bella (Maria Stewart)**

39. **Unattached (Seth Iverson)**

APPROVAL of LAST MINUTES (7:05 – 7:06)

- A. Approved.

PRESIDENT'S REPORT (7:06 - 7:10)

- A. Larry Martin is now the Midwest Regional Representative for USAC.

TREASURER'S REPORT (7:10 - 7:20)

- A. NA

TECHNICAL COMMISSION'S REPORT (7:20 - 7:30)

- A. Year-to-Date: (None)
B. Upcoming:
1. Ken Woods using transponders for their race; cameras or eyes still necessary for "money" positions.
2. Officials understaffed for entire year. Could lead to race cancellations.

OLD BUSINESS (7:30 - 8:15)

- A. MCF Vision/Mission/Goals Retreat:
1. Mike Lyner has found a consultant. He will be interviewing the MCF board and Club officials. Details forthcoming.
B. 2008 Racing Calendar:
1. Grumpy's Event X cancelled.
2. Oxbow cancelled.
3. Charity TT rescheduled from 4th to 18th May
4. Cyclocross:
1. Dan Cleary has a draft of a letter that will be sent out soon
C. Improved MCF Web Presence:
1. Tone Coughlin released new MCF Website and Bulletin Board
2. People can request "publish" permissions, which will be granted to appropriate people. Author accounts to be distributed. Tone should be publisher, but others should be authors.
D. Track Club Volunteer Nights
1. NSC has requested MCF Clubs take a Thursday night and provide 8-10 volunteers for varying roles. Free racing for their members that night (or other night) in payment.
E. Selection of MCF riders for the MEN'S Nature Valley GP:
1. 12 spots to fill: Discussions pursuing options for top two 4-person teams picked from selector races; next 4 riders invited to from a composite MCF team.
F. ROY:
1. ROY events have been chosen.
2. Discussion on leaders' jerseys. MWWCMR has jerseys awarded after each race. MCF ROY couldn't do that but could offer a ROY armband that the series leader could wear at each event, or provide end of season ROY jerseys for category winners.

NEW BUSINESS (8:15 - 9:00)

- A. Chip Timing: Mike Delaney and Ben Popp (Endurance Promotions)
1. Endurance Promotions will purchase system for \$10k.
B. Proposal to MCF:
1. Give \$20 rebate to the first 250 licensed riders- Bring chip cost down from \$110 to \$90
2. Endurance Timing will match the MCF. Giving \$20 rebate to reduce cost to \$70.
3. Purchase 25 chips to be used by juniors
C. Rider Purchasing Options:
1. Purchase for \$70 with MCF rebate (\$20) and Endurance Timing rebate (\$20)

2. Lease for \$40 for cycling season-summer through cyclo cross schedules
 3. Weeknight races-\$3 per night
 4. Weekend races-\$5 per day/\$10 per stage race
- D. Benefits for product/race:
- Other disciplines use chip timing
 - Make technology available to promoters
 - Provide online pre-reg
4. MCF can offset even more costs to riders by subsidizing chip purchase (\$20/chip)
 5. B/M would offer their services to promoters.
Camera for 'money places' will be part of services.
 6. Questions?
 - a. Why no chip timing until now?
 - b. Response: Cost
 - c. Will cost of services increase dramatically over time?
 - (i) Response: Unkown
 - d. If MCF subsidizes rider chips, is MCF promoting a monopoly to B/M's company for services?
 - (i) Endurance Timing response: No, as there are five other orgs in the area that use the same chip.
 - e. MCF is 503(c). Can they provide money to for-profit orgs?
 - (i) Yes. but subsidy would be going to riders. And since MCF is 503(c), services like this would have to be put out for bid.
 - f. Officials become backup system for races. If system fails, old system must be used; therefore, they must score results as they have.
 7. Moving forward:
 - a. MCF asking for more details from B/M -- rate cards to promoters.
 - b. MCF needs to solicit bids from others for spending this amount of money (250 chips * \$20 = \$5000).
 - c. Discussions with MCF members needs to happen.
 - d. Endurance Promotions needs to work with promoters to get them to use their services.
 8. Motion was made and carried to delay any action until next mtg, until more details are known

MEETING ENDED at 9:20pm

ATTACHMENTS

- A. Chip Timing Presentation:



- Partnership of Ben Popp and Mike Delaney
- Ben Popp-Owner of Endurance Athlete, successful cross country ski and bike racer.
- Mike Delaney-President of Loon State Cyclists, Event Director for Tour de Granite Country

Chip Timed Events

- Complete, Accurate and Timely Results
- Online registration
- Web accessible results-complete with race data for the individual racer

Why Chip Timing?

- Racers are demanding complete, accurate and timely results
- MCF Promoters want to provide a quality event at an affordable price
- MCF can further assist in creating first class cycling events

Available to all MCF members

The FAQ's

Who will use it?	All racers in any AMB chip timed races (LOTS)
What does it cost?	\$70 to buy your own chip that you will keep forever (if MCF supports chip buy with \$20 & ET rebate of \$20)
How long is the chip good for?	AMB assures us that the technology is good for at least 5 but likely many more
Can I rent a chip?	Yes, each race will have them for rent for \$5 per race.
Must I leave a rental deposit?	Yes, You will be asked for \$90 in either cash, check or a CC number to make sure the chip is returned
How do I attach it?	It is attached with 2 zip-ties(in case one breaks) on either fork leg about half way up
Will it still show whose tire gets to the line first?	Yes, the wires are aligned so that it gets its signal when your tire is at the finish line
Who owns the system?	The AMB Chip system is owned by Endurance Timing a race timing company located in St. Paul Minnesota
What is the cost to promoters?	Depends on amount of racers and race format. Base cost is \$150 - \$500, with a per rider fee from \$1-\$5.
What are the costs from alternative chip timing companies?	Base cost is often \$1,000-, + mileage, lodging , with a per rider cost of \$1-\$5 – average total event cost of \$1,800-\$2,000+.
How will it make racing better?	It will allow for all racers to be scored regardless of how far back they are. It will allow for timed stage racing. It will give accurate Time Trial results. Results will be available immediately and on the web within in 12 hours.

Windermere Training Race Windermere Training Criterium
Results of A Race - A Race

TopView Sports
Generated on 7/18/2007 12:23 PM

Sample Results

Pos	Pl C	No.	Name	Class	Laps	Total Tm	Diff	Gap	Avg. Speed	Best Tm	Best Spd	In Lap	Car/Bike Reg	Nat/State	Sponsor	Points
1	1	215288	Mark Proffer	A Race	27	1:13:53.590	-	-	21.924	1:19.200	45.455	27	2135703c	FL	Atlantic Shores Velo	0
2	2	002	Matt Straub	A Race	27	1:13:54.891	+1.301	+1.301	21.917	1:20.279	44.844	27	cfcf2df			0
3	3	53461	Tim Molyneux	A Race	27	1:13:55.000	+1.410	+0.109	21.917	1:20.803	44.553	27	acbf9135	FL	Atlantic Shores Velo	0
4	4	61561	John Kern	A Race	27	1:13:55.422	+1.832	+0.422	21.914	1:21.456	44.196	27	6a344dfc	FL		0
5	5	140720	Robert Cutts	A Race	27	1:15:14.159	+1:20.569	+1:18.737	21.532	1:24.777	42.464	5	ceec40e4	FL	Orlando Road Club	0
6	6	219854	Richard Perpinan	A Race	26	1:14:01.863	1 Lap	1 Lap	21.072	1:24.605	42.551	5	6633a172	FL	Atlantic Shores Velo	0
7	7	001	Lee Hamilton	A Race	26	1:14:32.632	+30.769	+30.769	20.927	1:25.452	42.129	5	211db088			0
8	8	249044	Kenneth Taylor	A Race	25	1:12:36.800	2 Laps	1 Lap	20.657	1:25.336	42.186	5	43f871e8	GA		0
9	9	179100	Ken Janata	A Race	25	1:14:02.103	+1:25.303	+1:25.303	20.261	1:25.227	42.240	5	41424f38	FL	Orlando Road Club	0
DNF	10	52200	David Sanborn	A Race	14	54:05.507	-	-	15.529	1:24.665	42.521	5	50ef44aa	FL		0



WHAT could racers expect?

Racers can expect fast, accurate, complete results, with web accessibility, along with online registration and quicker, easier onsite registration.

WHAT are the advantages for Promoters?

Complete, accurate results at an affordable cost, with increased flexibility and options – KOM, prime, sprint options, results hosting, online registration and more.

WHAT are the advantages for the MCF?

Can spend time building the MCF and supporting it's mission, attracting new members and fostering a positive cycling environment instead of debating results and resolving race issues that arise from event management problems.

Road Races



- Multiple fields on the course at same time
- KOM competitions
- Registration and Results made simpler and faster
- Precise finish places in field sprints

Criteriaums

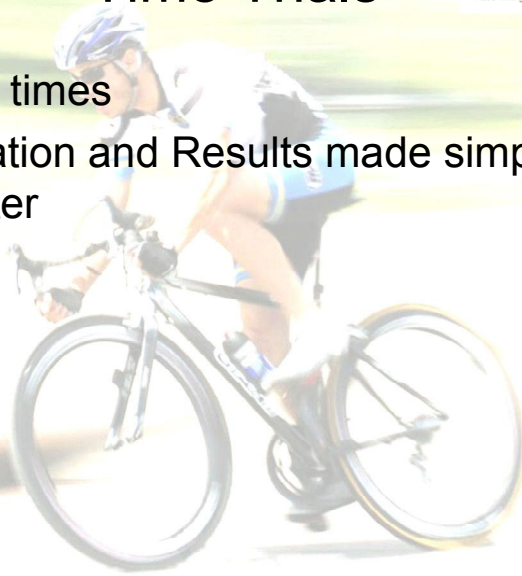


- Detail for announcer-average speed of peleton, who has led the most laps, who has been lapped, who is leading on the backside of course
- Keeps track of who is on the lead lap and who is behind by how many laps
- Registration and Results made simpler and faster

Time Trials



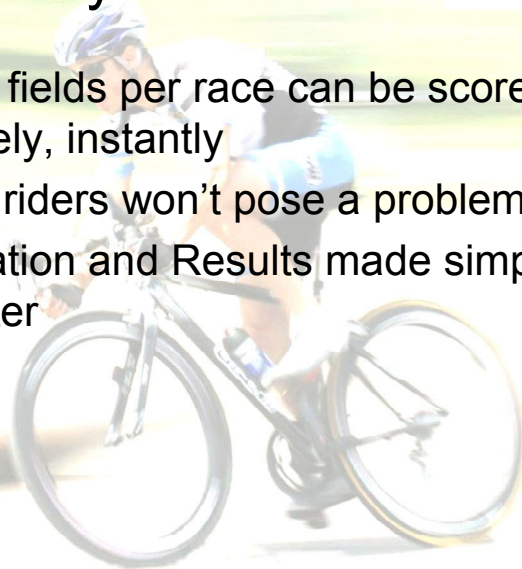
- No start times
- Registration and Results made simpler and faster



Cyclo Cross



- Multiple fields per race can be scored accurately, instantly
- Lapped riders won't pose a problem
- Registration and Results made simpler and faster





WHY should racers pay for chips

To make Chip Timing a reality at a majority of MCF races. Without rider/MCF member support at this time it would be cost prohibitive for promoters to implement chip timing (without drastically increasing race fees). This is an effort to improve the quality of the MCF races and events.

WHY should the MCF back this financially and philosophically?

- In accordance with the MCF mission, the assistance would support Minnesota racing, assisting in fostering a positive race experience for participants, and supporting promoters in offering premier cycling events.
- Implimented by Florida Cycling Federation with very successful results



Proposal to MCF

- Give \$20 rebate to the first 250 licensed riders- Bring chip cost down from \$110 to \$90
- Endurance Timing will match the MCF. Giving \$20 rebate to reduce cost to \$70.
- Purchase 25 chips to be used by juniors

Rider Purchasing Options

- Purchase for \$70 with MCF rebate (\$20) and Endurance Timing rebate (\$20)
- Lease for \$40 for cycling season-summer through cyclo cross schedules
- Weeknight races-\$3 per night
- Weekend races-\$5 per day/\$10 per stage race

Distribution Plan

- April 8 – 11
- Sell/Lease chips at two different local bike shops per day-scheduled shops to be posted on www.MCF.net
- April 12
- Sell/Lease chips at Beginner Clinic at OPUS



Plan Start Date

First Tuesday Night Worlds at
OPUS
April 15, 2008



For Additional information:

Ben Popp • 612-991-7829 •
ben@enduranceathlete.com
Mike Delaney • 763.420.2914 •
mijoydelaney@juno.com